

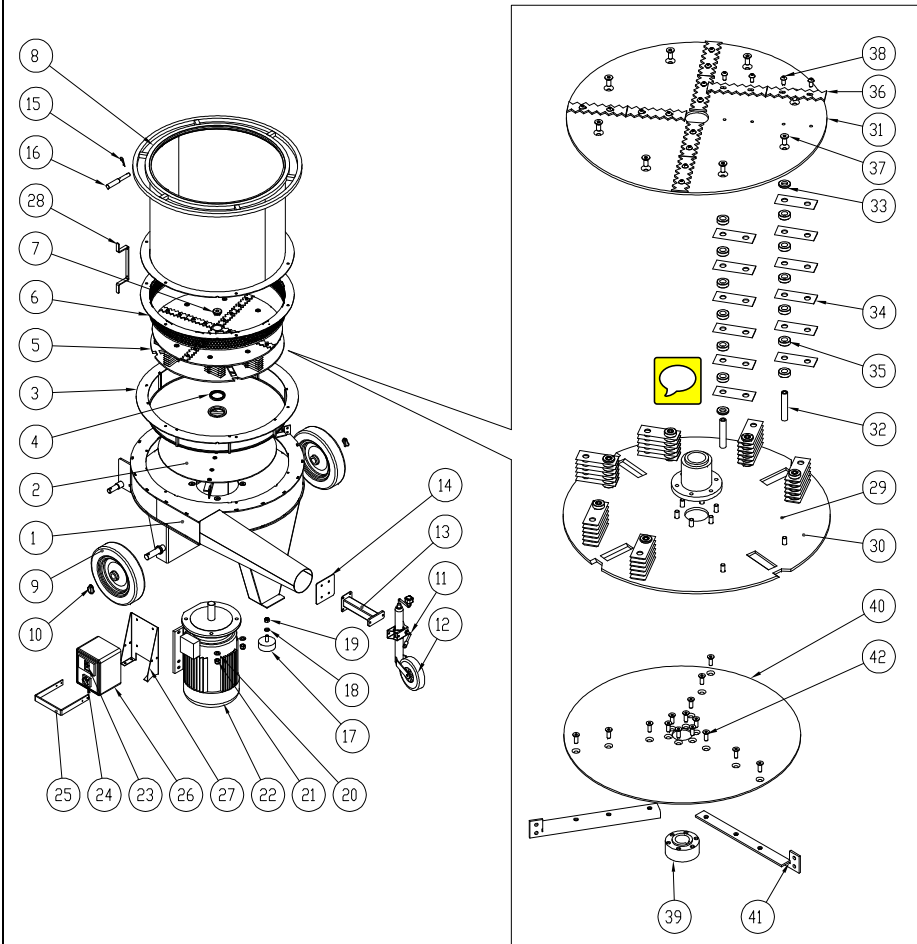
# TPF 8

# TPF 8 Electric motor 15 kW



Pos.	Description	No.	Code
1	Frame	1	001115
2	Fan blade disc Assembly (electric)	1	001116
3	Box	1	001117
4	Oil seal 70x90x10	1	900779
5	Rotor Assembly (electric)	1	001118
6	Screen	1	001119
7	Rotor washer	1	001120
8	Hopper	1	001121
9	Wheel	2	030410000
10	Circlip pin	2	050900000
11	Wheel support ø48	1	900248
12	Wheel ø48	1	900244
13	Foot support	1	001122
14	Plate	1	001123
15	Elastic pin	1	900663
16	Rod	1	900566
17	Rubber foot ø100x40	1	900780
18	Washer ø16x32	1	900003
19	Self lock nut M16	1	900369
20	Washer ø18x36	4	900781
21	Self lock nut M18	4	900782
22	Electric motor 15 kW	1	900783
23	Overload cut-out MS32-2532	1	900784
24	Commutator	1	900785
25	Control box protection	1	001124
26	Control box Assembly	1	001125
27	Control box support	1	032010000
28	Wire carrier	1	001126
29	Rotor hub	1	001127
30	Middling disc	1	001128
31	Disc (primary separator)	1	001129
32	Pin	8	001130
33	Spacer H=6	8	B19001020
34	Blade	48	030330000
35	Spacer H=12	48	B19001021
36	Primary separator	8	031500000
37	Screw TSPEI M12x30	22	900703
38	Screw TBEI M10x20	16	900786

Pos.	Description	No.	Code
39	Hub	1	001131
40	Disc (fan blade)	1	001132
41	Fan blade	3	001133
42	Screw TSPEI M10x30	15	900473



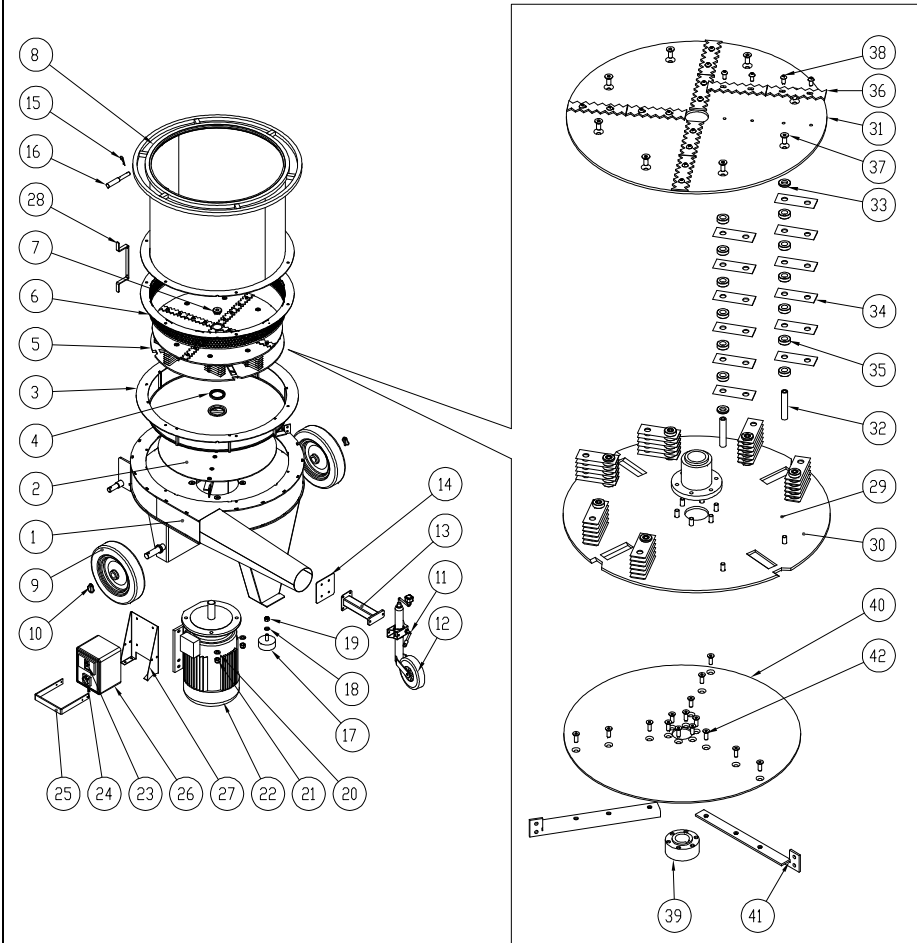
# TPF 8

# TPF 8 Electric motor 18.5 kW



Pos.	Description	No.	Code
1	Frame	1	001115
2	Fan blade disc Assembly (electric)	1	001116
3	Box	1	001117
4	Oil seal 70x90x10	1	900779
5	Rotor Assembly (electric)	1	001118
6	Screen	1	001119
7	Rotor washer	1	001120
8	Hopper	1	001121
9	Wheel	2	030410000
10	Circlip pin	2	050900000
11	Wheel support ø48	1	900248
12	Wheel ø48	1	900244
13	Foot support	1	001122
14	Plate	1	001123
15	Elastic pin	1	900663
16	Rod	1	900566
17	Rubber foot ø100x40	1	900780
18	Washer ø16x32	1	900003
19	Self lock nut M16	1	900369
20	Washer ø18x36	4	900781
21	Self lock nut M18	4	900782
22	Electric motor 18.5 kW	1	900787
23	Overload cut-out MS32-2532	1	900784
24	Commutator	1	900785
25	Control box protection	1	001124
26	Control box Assembly	1	001125
27	Control box support	1	032010000
28	Wire carrier	1	001126
29	Rotor hub	1	001127
30	Middling disc	1	001128
31	Disc (primary separator)	1	001129
32	Pin	8	001130
33	Spacer H=6	8	B19001020
34	Blade	48	030330000
35	Spacer H=12	48	B19001021
36	Primary separator	8	031500000
37	Screw TSPEI M12x30	22	900703
38	Screw TBEI M10x20	16	900786

Pos.	Description	No.	Code
39	Hub	1	001131
40	Disc (fan blade)	1	001132
41	Fan blade	3	001133
42	Screw TSPEI M10x30	15	900473



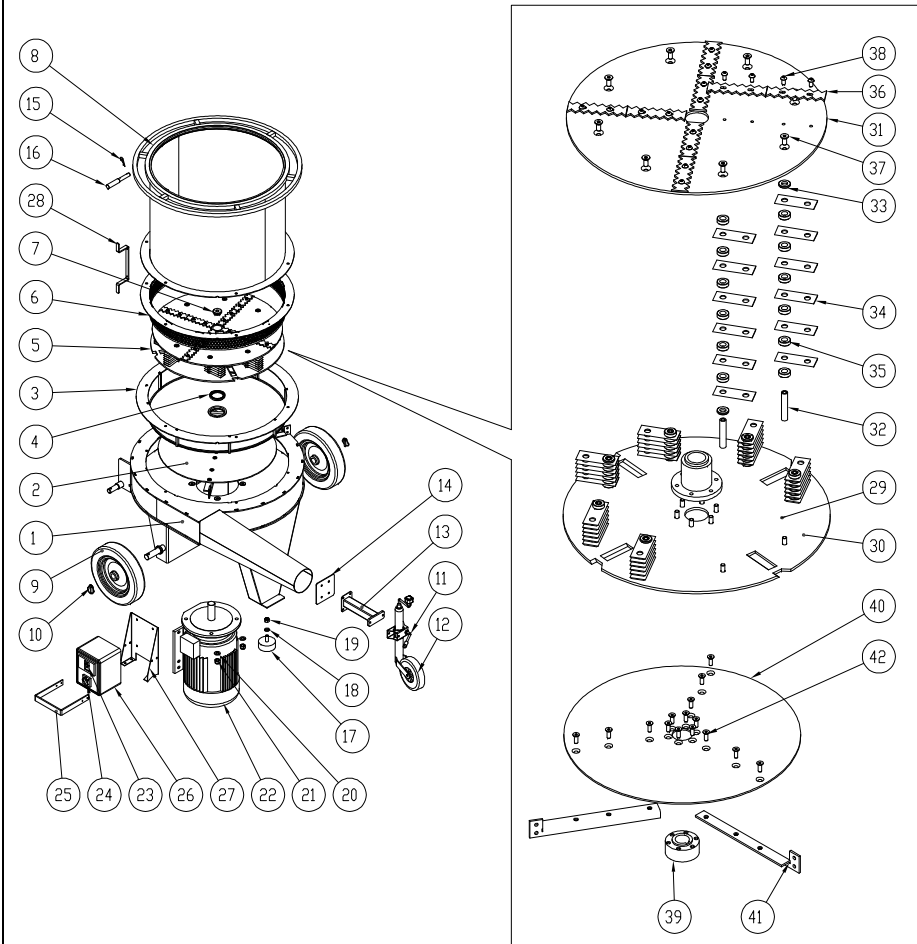
# TPF 8

# TPF 8 Electric motor 20 kW



Pos.	Description	No.	Code
1	Frame	1	001115
2	Fan blade disc Assembly (electric)	1	001116
3	Box	1	001117
4	Oil seal 70x90x10	1	900779
5	Rotor Assembly (electric)	1	001118
6	Screen	1	001119
7	Rotor washer	1	001120
8	Hopper	1	001121
9	Wheel	2	030410000
10	Circlip pin	2	050900000
11	Wheel support ø48	1	900248
12	Wheel ø48	1	900244
13	Foot support	1	001122
14	Plate	1	001123
15	Elastic pin	1	900663
16	Rod	1	900566
17	Rubber foot ø100x40	1	900780
18	Washer ø16x32	1	900003
19	Self lock nut M16	1	900369
20	Washer ø18x36	4	900781
21	Self lock nut M18	4	900782
22	Electric motor 20 kW	1	900788
23	Overload cut-out MS32-2532	1	900784
24	Commutator	1	900785
25	Control box protection	1	001124
26	Control box Assembly	1	001125
27	Control box support	1	032010000
28	Wire carrier	1	001126
29	Rotor hub	1	001127
30	Middling disc	1	001128
31	Disc (primary separator)	1	001129
32	Pin	8	001130
33	Spacer H=6	8	B19001020
34	Blade	48	030330000
35	Spacer H=12	48	B19001021
36	Primary separator	8	031500000
37	Screw TSPEI M12x30	22	900703
38	Screw TBEI M10x20	16	900786

Pos.	Description	No.	Code
39	Hub	1	001131
40	Disc (fan blade)	1	001132
41	Fan blade	3	001133
42	Screw TSPEI M10x30	15	900473



# TPF 8

# TPF 8 PTO 540 RPM



Pos.	Description	No.	Code
1	Frame	1	001115
2	Fan blade disc Assembly (PTO)	1	001134
3	Box	1	001117
4	Oil seal 70x90x10	1	900779
5	Rotor Assembly (PTO)	1	001135
6	Screen	1	001119
7	Rotor washer	1	001120
8	Hopper	1	001121
9	Wheel	2	030410000
10	Circlip pin	2	050900000
11	Wheel support ø48	1	900248
12	Wheel ø48	1	900244
13	Foot support	1	001122
14	Plate	1	001123
15	Elastic pin	1	900663
16	Rod	1	900566
17	Rubber foot ø100x40	1	900780
18	Washer ø16x32	1	900003
19	Self lock nut M16	1	900369
20	Washer ø18x36	4	900781
21	Self lock nut M18	4	900782
22	PTO extension Z-6	1	900789
23	B3 flange (left)	1	001136
24	B3 flange (right)	1	001137
25	Gearbox	1	900790
26	B5 flange	1	001138
27	Rotor hub	1	001139
28	Middling disc	1	001128
29	Disc (primary separator)	1	001129
30	Pin	8	001130
31	Spacer H=6	8	B19001020
32	Blade	48	030330000
33	Spacer H=12	48	B19001021
34	Primary separator	8	031500000
35	Screw TSPEI M12x30	22	900703
36	Screw TBEI M10x20	16	900786
37	Hub	1	001140
38	Disc (fan blade)	1	001132

Pos.	Description	No.	Code
39	Fan blade	3	001133
40	Screw TSPEI M10x30	15	900473

